

The only steel plate in the industry that uses 2.5D measurement.

#### Finecause Co.,Ltd-Steel plate inspection standard

A. Due to the fact that in the past, when printing plate manufacturres made steel plate for customers, it often happened that the depth of the steel plate had met the standard , but there was a problem of color difference when entering production.

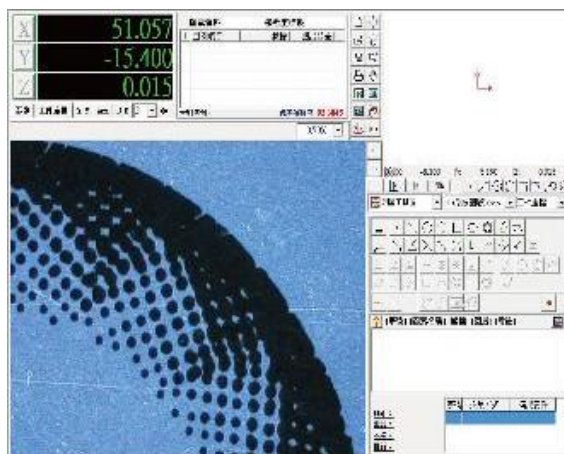
B. Therefore, Finecause has developed a set of corresponding models. In addition to the basic standard depth inspection, it also established the first standard for the steel plate ,and established the production serial number for the subsequent printing plate.

C. That is using double inspection, 1.Depth 2.Patten size.(or dot size)

D. Because the correct depth only represents the thickness of the patten size (or dot size)of the figure often affects people`s judgment on color.

E.That is so say, in the same color state, due to the relationship between the size of the patten(or the size of the dot),the visual effect of different color shades is produced.

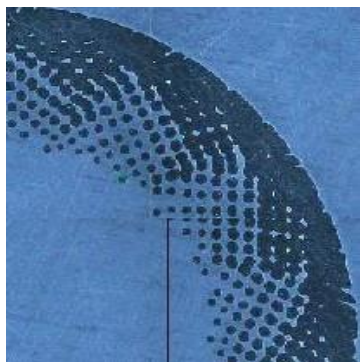
#### Example: 2.5D measuring instrument measuring pattern comparison



A Pattern film



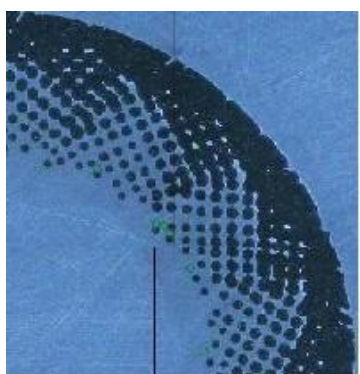
A Pptern 6/6 production cliché



A Ptern 6/6 production cliché-2



A Ptern6/6 production cliché-3



A Ptern 6/6 production cliché-4



A Ptern6/6 production cliché-5